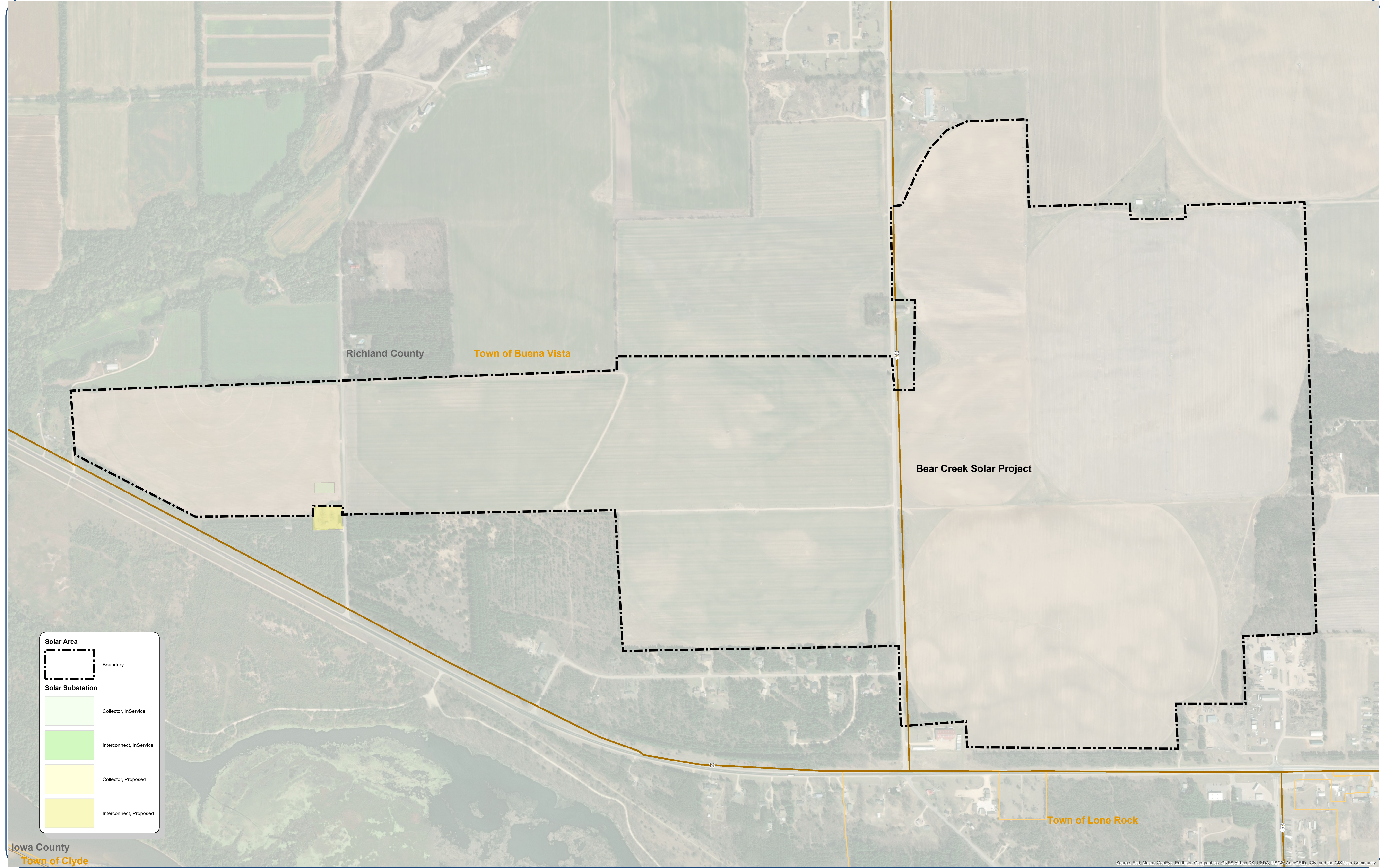


Intertie Power and Light Company (IPL) and Wisconsin Power and Light Company (WPL) both Alliant Energy utility companies and hereafter referred to as the Utilities assume no liability and make no warranty or representation whatsoever as to the accuracy or completeness of the information contained on this map. Any data provided is for general information only and any use of this data is at your own risk. Any intention to excavate requires compliance with state law including contacting the appropriate one call notification center. Prior to excavation, the actual physical location of buried facilities must be determined pursuant to the requirements of applicable law. This map constitutes limited protected nonpublic data that is confidential and proprietary to the Utilities. By one of the Utilities issuing you a copy of this map, you are deemed to have agreed to treat this information as confidential and to use and disclose it only for the specific project identified in your request for the map and as further restricted below. (If You disagree, please destroy this map and inform the Alliant Energy representative that sent it to You that You cannot copy, that your copy has been removed from all storage mechanisms, and that You will not further use this map.) This map may only be copied or reproduced for internal use by the Utilities or copied, reproduced, or disclosed by You subject to the terms of a nondisclosure or confidentiality agreement between your organization and those to whom you intend to disclose such information for a specific project, whereby the potential recipients agree to use this map only for the specific project identified in the request for the map and to treat this map as the Utilities' confidential and proprietary information restricted from further use, copying or disclosure indefinitely. Any other use, copying or reproduction is strictly forbidden.



Solar Area

- Boundary

Solar Substation

- Collector, InService
- Interconnect, InService
- Collector, Proposed
- Interconnect, Proposed

Iowa County
Town of Clyde

Alliant Energy Confidential
Classification: Confidential
Solar Project Area

1:4,521

Source: Esri, Maxar, GeoEye, Earthstar Geographics, CNES/Airbus DS, USDA, USGS, AeroGRID, IGN, and the GIS User Community

